

BRAND NEW WITH PANORAMIC VIEWS, MARETERRA

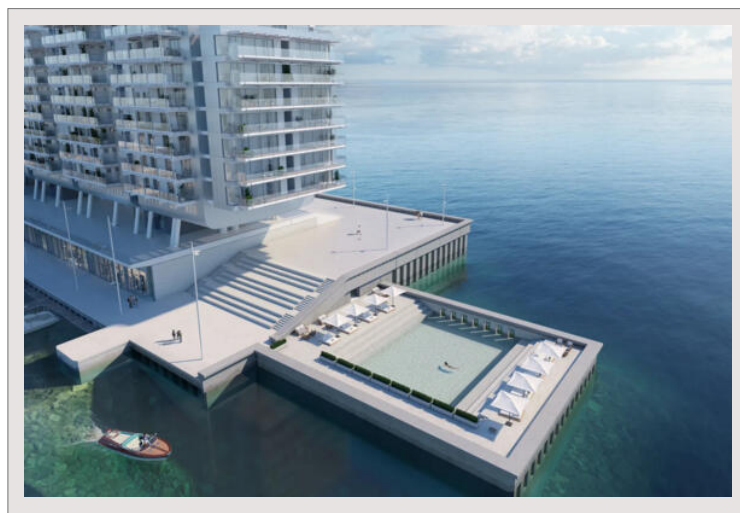
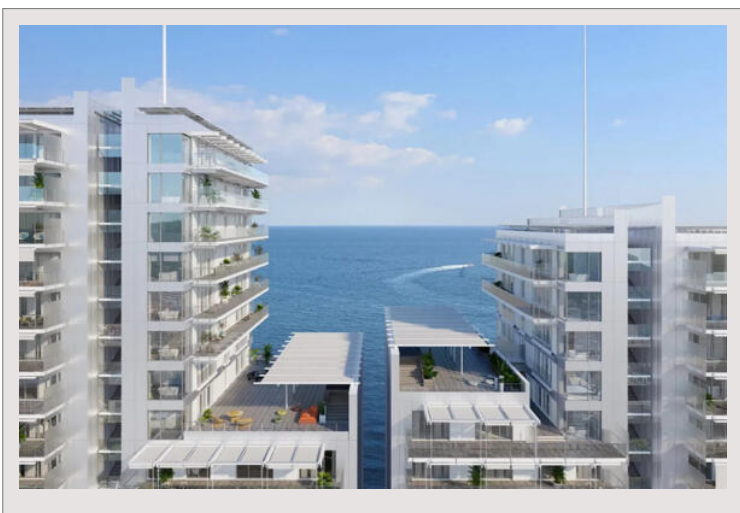
Rental Monaco

Rent on request

SUPERB AND LARGE PROPERTY WITH +450 SQM LIVING SPACE AND LARGE OUTSIDE TERRACES OVERLOOKING THE SEA. REGAL ENTRANCE HALL AND HUGE LIVING SPACES

Type	Rental	Living area	509 sqm
Product type	Apartment	Bedrooms	4
Number of rooms	6	Bathrooms	4
Building	Anse du Portier	Cellars	1
District	Anse du Portier	Box	2
Floor	High	Condition	New
View	SEA AND MONACO CITY	Exposure	SOUTH
Release date	Immediate		

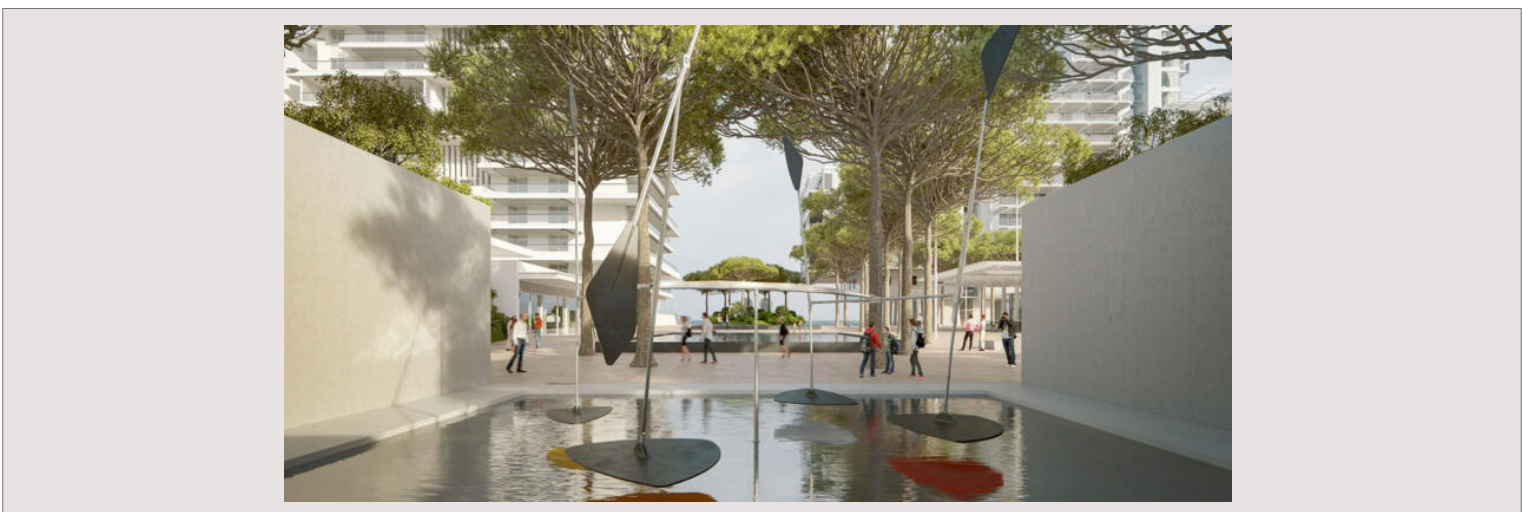
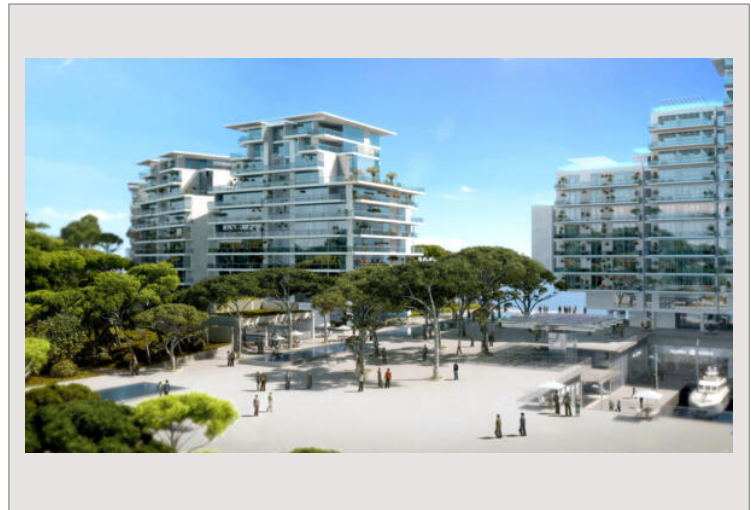
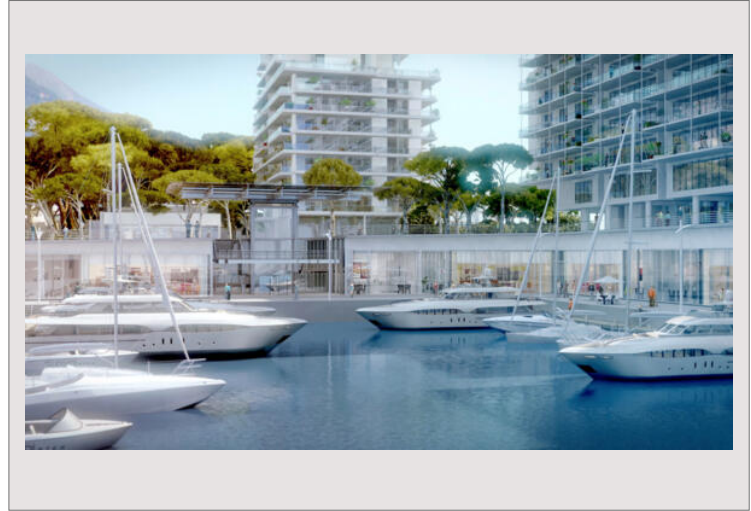
BRAND NEW AND WONDERFUL APARTMENT WITH 3 LARGE BEDROOM SUITES WITH BATHROOMS AND DRESSING ROOMS, A 4TH BEDROOM, A GUEST WC, HUGE LIVING/DINING AREA WITH PANORAMIC VIEWS. GORGEOUS VIEW TO MONACO CITY FROM THE BACK TERRACE AND FULL SEA FROM THE FRONT, MAIN AND STAFF ENTRANCES. THE BUILDING IS BRAND NEW AND 1ST CLASS, WITH LUXURY SERVICES.



BRAND NEW WITH PANORAMIC VIEWS, MARETERRA



BRAND NEW WITH PANORAMIC VIEWS, MARETERRA



BRAND NEW WITH PANORAMIC VIEWS, MARETERRA

